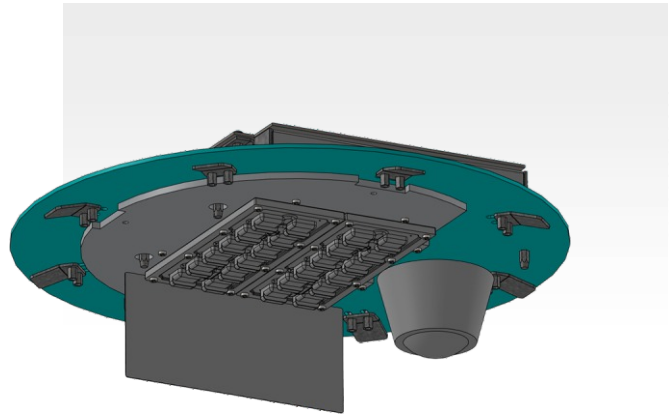


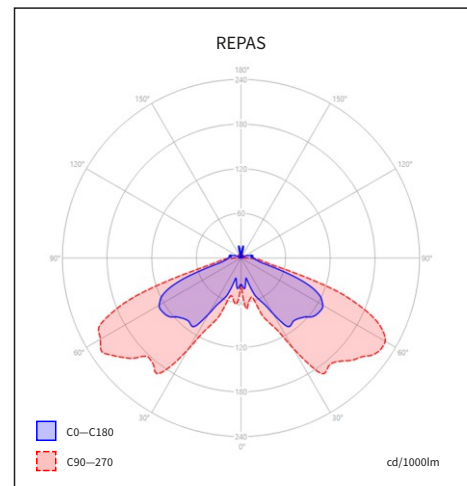
REPAS

Retrofit LED module designed for upgrading HID luminaires.



TECHNICAL SPECIFICATIONS

Light source	LED chips SMO
Supply voltage	AC 220–240 V / 50–60 Hz
Connection	Pre-wired cable
Control gear	Electronic driver with surge protection L/N-PE 10 kV
Surge protection	Additional 10 kV surge protection (S)
Fuse protection	6,3 A fuse (J)
Control options	Non-dimmable (no marking), DALI (DALI), virtual midnight (A) Ready for NEMA wireless communication (N), Zhaga (Z) or 2× Zhaga (Z2)
Constant Lumen Output	CLO (C)
Optical system	M-class roads (Mxx), L-class roads (Lxx), reflector (Pxx) Area (Uxx), combined (Kxx), 2×2 optics, 30 optics types BACK Light shields (BL1/BL2), FRONT Light shields (FL1/FL2)
Light distribution	Direct
Colour rendering index	CRI > 70
Colour temperature	BLUE FREE™ (AMBER), TW (1,700–3,000 K) 2,200 K / 2,700 K / 3,000 K / 4,000 K / 5,000 K / 5,700 K
Lifetime	> 100,000 h (L80)
Protection class	I, II
Max. ambient temperature	-40/+55 °C
Ingress protection	IP 66
Impact resistance	IK 08
Mounting method	Installation with 4 mounting clips



This product contains a light source of energy efficiency class C (730/740), D (AMB/727), E (722).

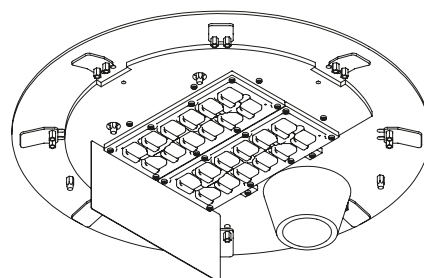
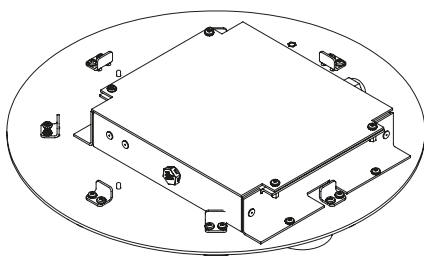
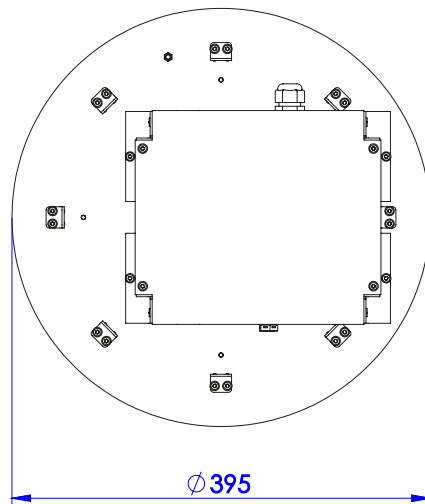
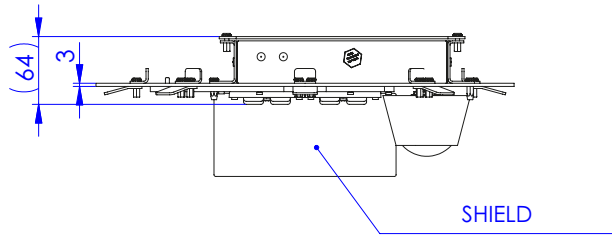
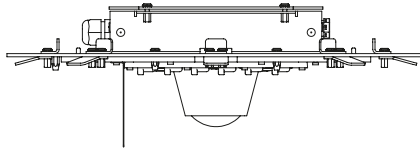
VARIANTS (chip 5050)	POWER (W)					LUMINAIRE OUTPUT FLUX (lm)		LUMINAIRE EFFICIENCY (lm/W)	SERVICE LIFE (hrs.)	WEIGHT
	Color temperature (K)					min	max	Up to	L90B10	kg*
Catalog name	BLUE FREE AMBER U500 < 1.7%	2200K Ra 70 U500 < 7%	2700K Ra 70 U500 < 10.6%	3000K Ra 70 U500 < 14%	4000K Ra 70 U500 < 21%					
REPAS Lxx 1k0	7,6	7,6	7,1	6,6	6,4	848	945	147,7	> 120 000	3,0
REPAS Lxx 1k5	11,3	10,9	10,3	9,5	9,3	1 271	1 418	152,5	> 120 000	3,0
REPAS Lxx 2k0	14,2	13,8	12,6	12	11,4	1 695	1 891	165,9	> 120 000	3,0
REPAS Lxx 2k5	17,6	17,2	15,6	14,6	14	2 119	2 363	168,8	> 120 000	3,0
REPAS Lxx 3k0	21,1	20,7	18,9	17,7	16,9	2 543	2 836	167,8	> 120 000	3,0
REPAS Lxx 3k5	24,6	24,1	22,3	20,6	19,6	2 967	3 309	168,8	> 120 000	3,0
REPAS Lxx 4k0	28,2	27,7	25,5	23,6	22,6	3 390	3 781	167,3	> 120 000	3,0
REPAS Lxx 5k0	35,8	35,1	32,3	29,8	28,2	4 238	4 727	167,6	> 120 000	3,0
REPAS Lxx 6k0	41,1	40,5	39,4	36,3	34,3	5 086	5 672	165,4	> 120 000	3,0
REPAS Lxx 7k0	48,4	47,5	43,3	40,9	38,2	5 933	6 617	173,2	> 120 000	3,0
REPAS Lxx 8k0	53,4	52,5	50,4	46,9	44,3	6 781	7 562	170,7	> 120 000	3,0
REPAS Lxx 9k0	60,9	59,9	57,8	53,2	50,1	7 628	8 508	169,8	> 120 000	3,0
REPAS Lxx 10k0	-	67,4	61,3	60,2	56,6	8 476	9 453	167,0	> 120 000	3,0

* The weight may vary slightly depending on the luminaire version

- Ambient temperature (TQ): 25 °C
- Initial colour consistency: ≤ 5 SDCM
- Tolerance of optical and electrical parameters: ±10%

The term BLUE FREE™ (AMBER) refers to a light source with a blue spectral content of less than 2 %.

When the CLO function is used, the initial power consumption and luminous flux are 10 % lower than the values stated in the table.
Photometric files with the CLO function are marked with the letter “C” at the end of the designation.



REPAS

REPAS II M01BL2 8k0 730 B124 45CAZ2 SJG H3S ENEC

REPAS	Luminaire name
bez značení	Class I (standard)
II	Class II
G2	Luminaire generation
M01	Roads
L01	Roads
P01	Directional
U01	Area
ZP1 / ZL1	Pedestrian crossings
K01	Combined optics
BL1	BACK Light shades (straight)
BL2	BACK Light shades (curved)
FL1	FRONT Light shades (straight)
FL2	FRONT Light shades (curved)
8k0	Luminous flux marking (source)
730	Colour rendering index Ra > 70 Colour temperature 3 000 K
B	LED module type
1	LED chip type
2	Chip performance BIN
4	Mask type

12	On/Off driver (noDALI) + 2 pole terminal block
13	On/Off driver (noDALI) + 3 pole terminal block
43	DALI driver + 3 pole terminal block
44	DALI driver + 4 pole terminal block
45	DALI driver + 5 pole terminal block
45P	DALI driver + 5 pole terminal block + motion sensor
40	DALI driver + disconnect terminal block (standard)
10	On/Off driver + disconnect terminal block (standard)
DO	D4i driver (for Zhaga connector) + disconnect terminal block (standard)

C	Constant Lumen Output (CLO)
A	Autonomous dimming
ZT	ZHAGA Top (top Zhaga connector), D4i driver
ZB	ZHAGA Bottom (bottom Zhaga connector), D4i driver
ZN	ZHAGA+NEMA connector (NEMA on top, Zhaga on bottom), D4i driver
ZZ	2× ZHAGA (top and bottom connector), D4i driver
Z	ZHAGA connector, 4-pin D4i driver
N	NEMA connector, 7 pin (always only the top connector), DALI driver
O	Disconnect terminal block
S	Additional surge protection 10 kV (S)
J	Fuse
G	Gesis connector
H	H05(07)RN-F cable (1 mm ²)
C	CYKY cable (1,5 mm ²)
WO	Without cable
2	2 core cable
3	3 core cable
5	5 core cable
S	Standard – 25 cm length of cable (led out of the luminaire)
1	1 meter (length in whole meters)

ENEC Certification



lumenlights.eu/repas-en
Aktualizace: 5. 6. 2026